

HSF
Compliant

Specifications

Current Rating : 1A AC/DC

Voltage Rating : 50V AC max.

Insulation Resistance : 100 MΩ min.

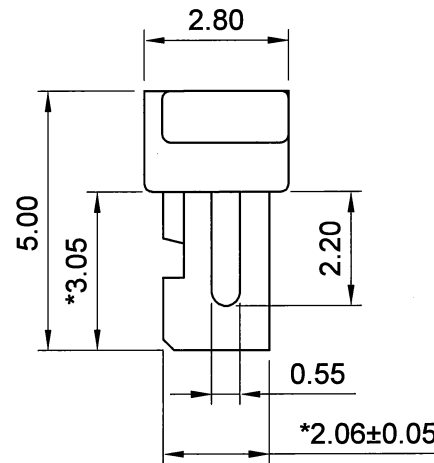
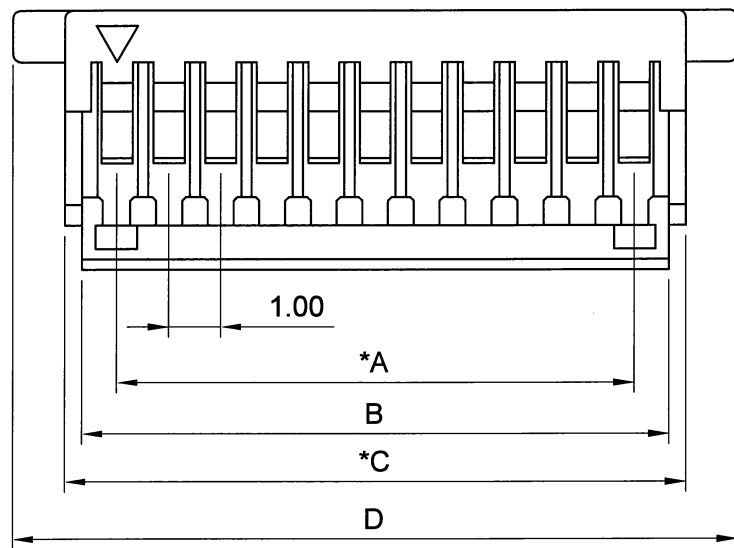
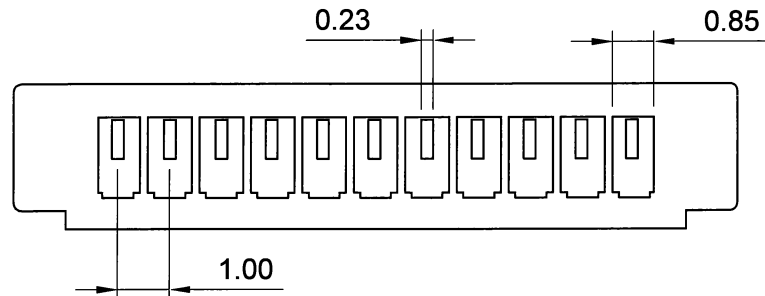
Contact Resistance : 20 mΩ max.

Dielectric Withstanding : AC 500V / minute

Operating Temperature : -25°C ~ +85°C

Insulator Material : PBT, UL 94V-0 (Natural)

Packing : Bag



100E-xxP

→ No. of contacts

No. of contacts	Dimension			
	A	B	C	D
02	1.0	2.37	3.00	5.0
03	2.0	3.37	4.00	6.0
04	3.0	4.37	5.00	7.0
05	4.0	5.37	6.00	8.0
06	5.0	6.37	7.00	9.0
07	6.0	7.37	8.00	10.0
08	7.0	8.37	9.00	11.0
09	8.0	9.37	10.00	12.0
10	9.0	10.37	11.00	13.0
11	10.0	11.37	12.00	14.0
12	11.0	12.37	13.00	15.0
13	12.0	13.37	14.00	16.0
14	13.0	14.37	15.00	17.0
15	14.0	15.37	16.00	18.0
16	15.0	16.37	17.00	19.0
20	19.0	20.37	21.00	23.0

D尺寸公差如下:

2P~10P±0.10mm

11P~16P & 20P±0.20mm

JAWS 兆旭股份有限公司
JAWS CO., LTD.

7F., No.31, Ln. 169, Kangning St., Xizhi Dist.,
New Taipei City 221, Taiwan (R.O.C.)
TEL:886-2-2692-2898
FAX:886-2-2692-2618
Http://www.jaws.com.tw

THIRD ANGLE
PROJECTION

DESIGN UNITS
■ mm □ INCH

SIZE: A4 SCALE: FREE SHEET: 1/1

CPN : DAN NO.: S10111-006

TITLE:
1.0mm Wire-to-Board Housing

PARTS NO.:
100E-xxP

DWG NO.:
JAWS-SOP-100E004

REV.
01

GENERAL TOLERANCES:

X. ±N/A
X.X ±0.25
X.XX ±0.10
ANGLE ±N/A

DRAWN

林峻吉

DATE 2012/11/01

CHECKED

Wang

DATE 2012/11/01

APPROVED

Wang

DATE 2012/11/01